

# **SOUTHWESTERN OREGON ECONOMIC OUTLOOK**

**SOWIB BOARD MEETING  
NOVEMBER 21<sup>ST</sup>, 2024**

# HAVE YOU BEEN ASKED TO PARTICIPATE IN A BUREAU OF LABOR STATISTICS (BLS) SURVEY? *PLEASE DO!*

**BLS survey information is gathered to create data** for businesses, jobseekers, workers and policy-makers about the economy including:

Employment*	Unemployment*	Occupational Wages*
Job vacancies*	Productivity	Occupational Employment*
Consumer spending patterns	Workplace injuries	Compensation
Long-term employment projections*	Employer-provided benefits	Price movements

*\* Collected and produced by Oregon Employment Department*

**Your response is vital to ensuring accurate, complete, and unbiased data** that is representative of the people and businesses in Oregon and the United States.

Your confidential responses are protected by federal and state law and strict security policies that prohibit us from releasing any information that could reveal the identity of you or your business without your consent.

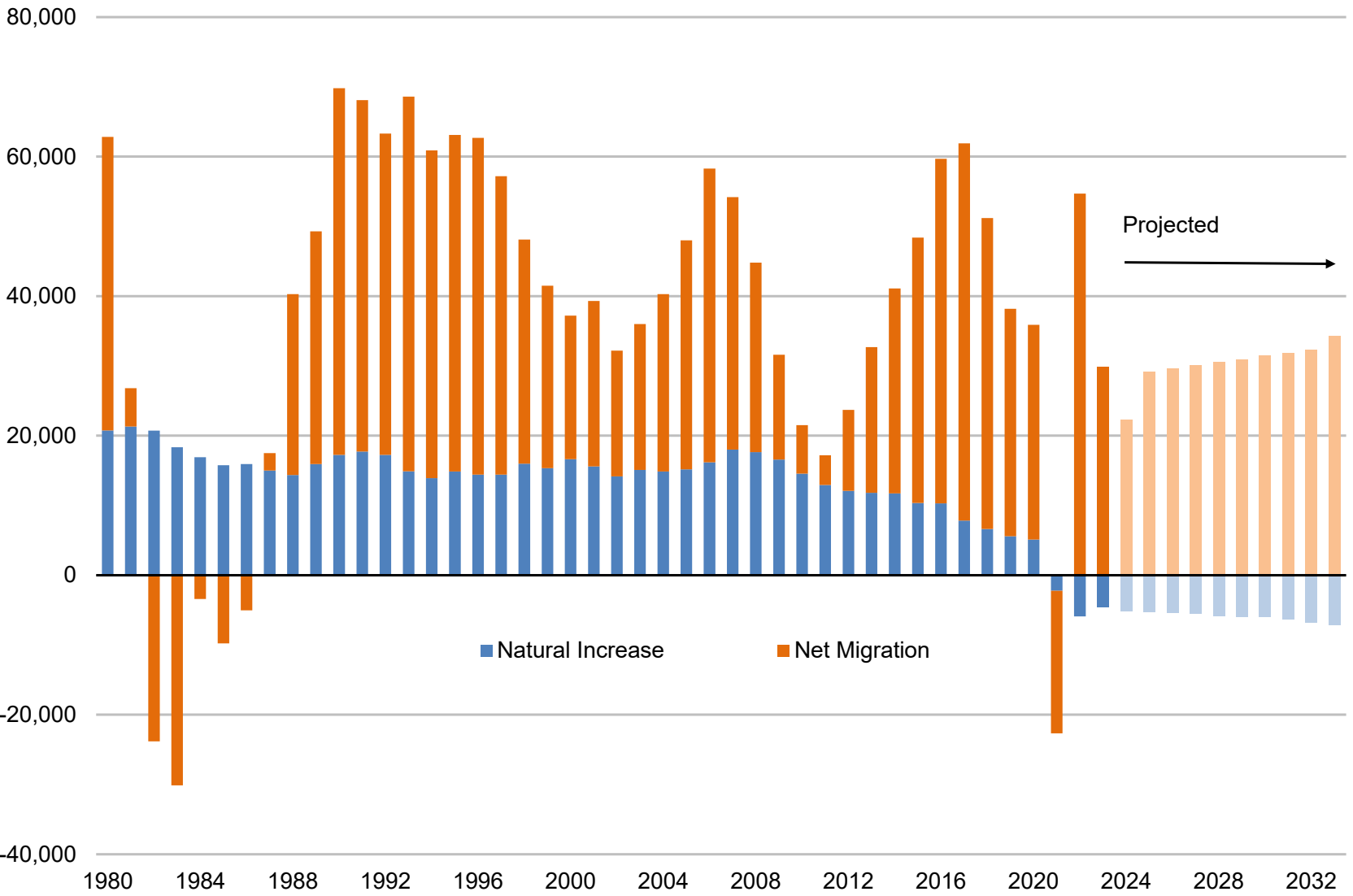
**Thank you for helping us track the Oregon economy!**

# WORKFORCE DYNAMICS

## Migration & Population Trends

# SLOWING LABOR FORCE GROWTH: SLOWER POPULATION GROWTH

## Oregon's Population Components of Change



Portland State University estimates show a rebound in 2022, but population growth is projected to be slower in the coming years than historical norms.

Source: Oregon Employment Department, Oregon Office of Economic Analysis

## THE SOUTHWESTERN REGION HAS GROWN AT A FASTER RATE THAN OREGON OVERALL

Migration continues to outpace natural increases to sustain population growth. Curry County grew at the fastest rate since April 2020 when the COVID pandemic began. The region gained over 11,000 residents in a four year period which accounts for nearly 16% of net migration in the state.

	July 1, 2023 Estimate	April 1, 2020 Census	Numeric Change April 2020 to July 2023	Percent Change April 2020 to July 2023	Average Annual Change since Census	Natural Increase 2020-23	Net Migration 2020-23
<b>OREGON</b>	<b>4,296,626</b>	<b>4,237,256</b>	<b>59,370</b>	<b>1.4%</b>	<b>0.4%</b>	<b>-13,751</b>	<b>73,121</b>
COOS	66,945	64,929	2,016	3.1%	0.9%	-1,866	3,882
CURRY	24,439	23,446	993	4.2%	1.3%	-1,054	2,047
DOUGLAS	113,748	111,201	2,547	2.3%	0.7%	-2,995	5,542

Source: Portland State University Population Research Center

# COUNTY TO COUNTY MIGRATION FLOWS

Curry County's proximity to California is a natural draw for in-migration.

Coos County Total Migration-US and Foreign	3,182	Curry County Total Migration-US and Foreign	1,431	Douglas County Total Migration-US and Foreign	4,825
Douglas County	217	Jackson County	92	Lane County	651
Lane County	182	Del Norte County	84	Coos County	226
Jackson County	124	Coos County	67	Jackson County	165
Curry County	93	Lane County	49	Josephine County	165
Deschutes County	84	Deschutes County	31	Multnomah County	119

Most migration occurs within the state with similar geographic representation.

# A QUARTER OF WORKERS ACROSS INDUSTRIES MAY RETIRE BY 2032

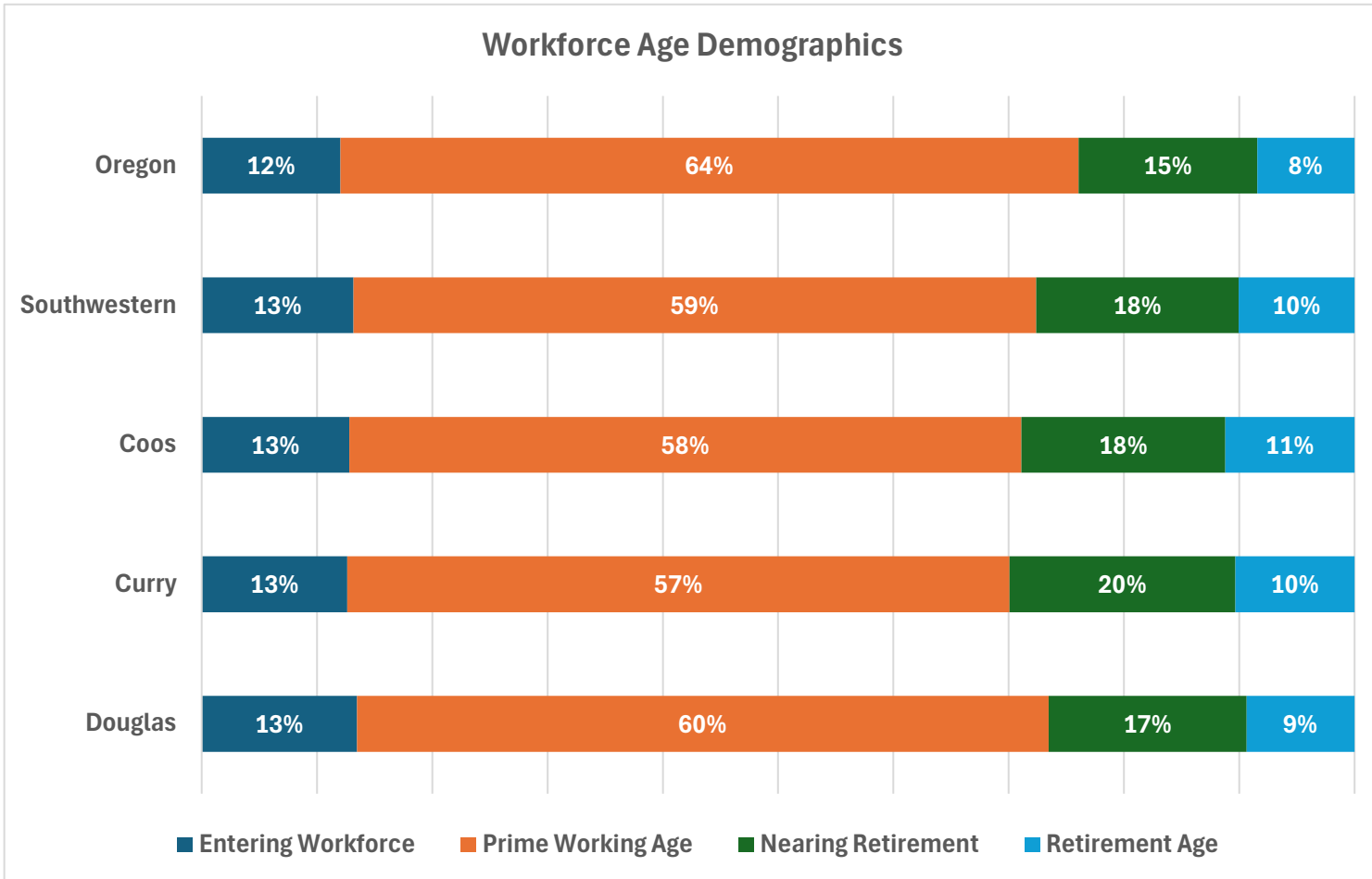
## Workers Ages 55+ Could Be Within a Decade of Retirement

Oregon Jobs in 2022	All Workers	Age 55+	% Age 55+
<b>All Sectors</b>	<b>1,908,164</b>	<b>455,792</b>	<b>24%</b>
Agriculture, Forestry, Fishing and Hunting	52,269	17,026	33%
Mining, Quarrying, and Oil and Gas Extraction	1,787	574	32%
Real Estate and Rental and Leasing	30,756	8,795	29%
Utilities	8,025	2,230	28%
Other Services	65,394	17,780	27%
Public Administration	75,343	20,117	27%
Wholesale Trade	77,229	20,205	26%
Educational Services	144,633	37,806	26%
Manufacturing	188,469	49,178	26%
Transportation and Warehousing	80,059	20,392	25%
Finance and Insurance	55,032	13,480	24%
Health Care and Social Assistance	284,182	69,324	24%
Retail Trade	209,208	47,907	23%
Administrative and Waste Services	108,487	24,775	23%
Construction	122,998	28,005	23%
Professional, Scientific, and Technical Services	111,361	24,248	22%
Arts, Entertainment, and Recreation	29,817	6,345	21%
Management of Companies and Enterprises	51,883	10,705	21%
Information	41,014	7,684	19%
Accommodation and Food Services	170,218	29,216	17%

Age distribution varies widely across industries. Leisure and hospitality related sectors trend younger while resource based and public administration sectors trend older. Training, mentoring and succession planning are more critical in certain industries.

Source: Oregon Employment Department and U.S. Census Bureau, Quarterly Workforce Indicators

# SOUTHWESTERN OREGON WORKFORCE AGE DEMOGRAPHICS



Employees entering the workforce have similar representation across all three counties. Curry County has the highest percentage of retirement horizon workers while Douglas skews slightly younger. The Southwest region's prime working age cohort is proportionately smaller compared to what we see statewide.

Source: U.S. Census Bureau Quarterly Workforce Indicators

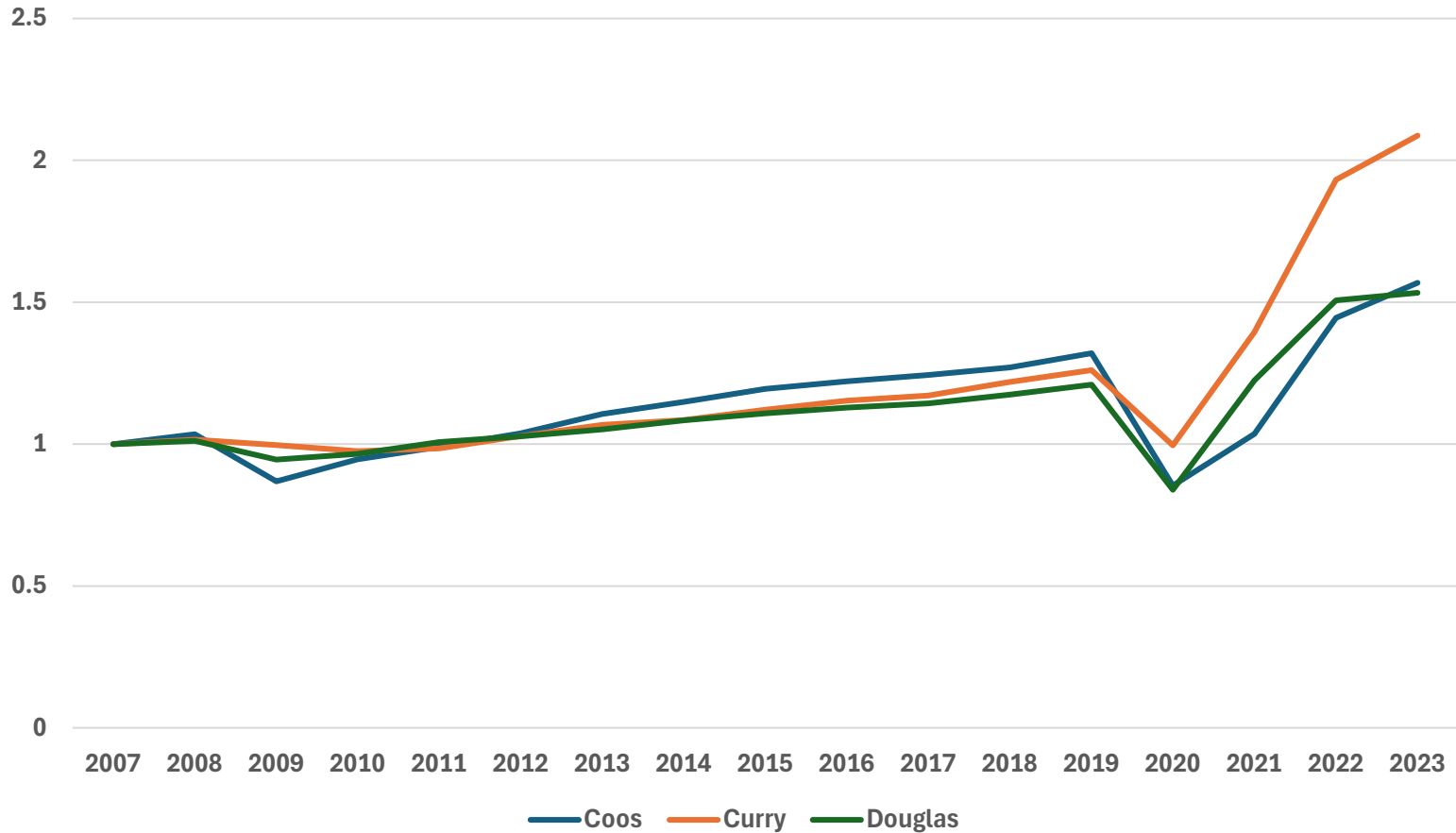


# TOURISM IMPACT

Travel Spending & Local Tax Revenue

# THE SOUTHWESTERN REGION IS SEEING INCREASED VISITOR SPENDING

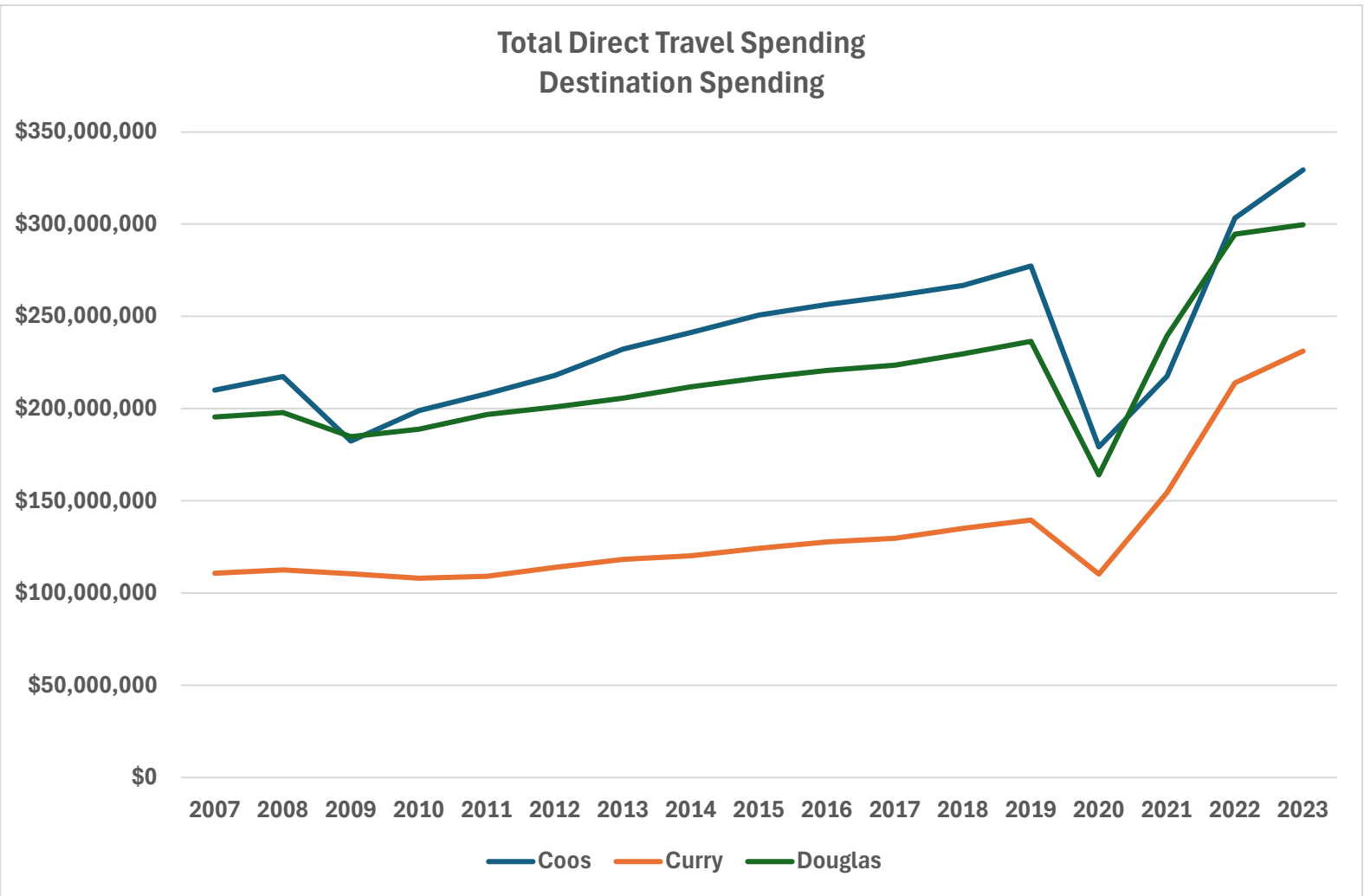
Index of Visitor Spending on Commodities



Indexed for 2007 dollars. Curry County visitors are spending more than twice what they did in 2007. Curry and Douglas visitors are spending 1.5 times what they were in 2007. This index shows how severe the negative impact to spending was in 2020.

Source: Dean Runyan Associates Travel Stats

# TOURISM CONTINUES TO BE A DRIVER OF ECONOMIC GROWTH

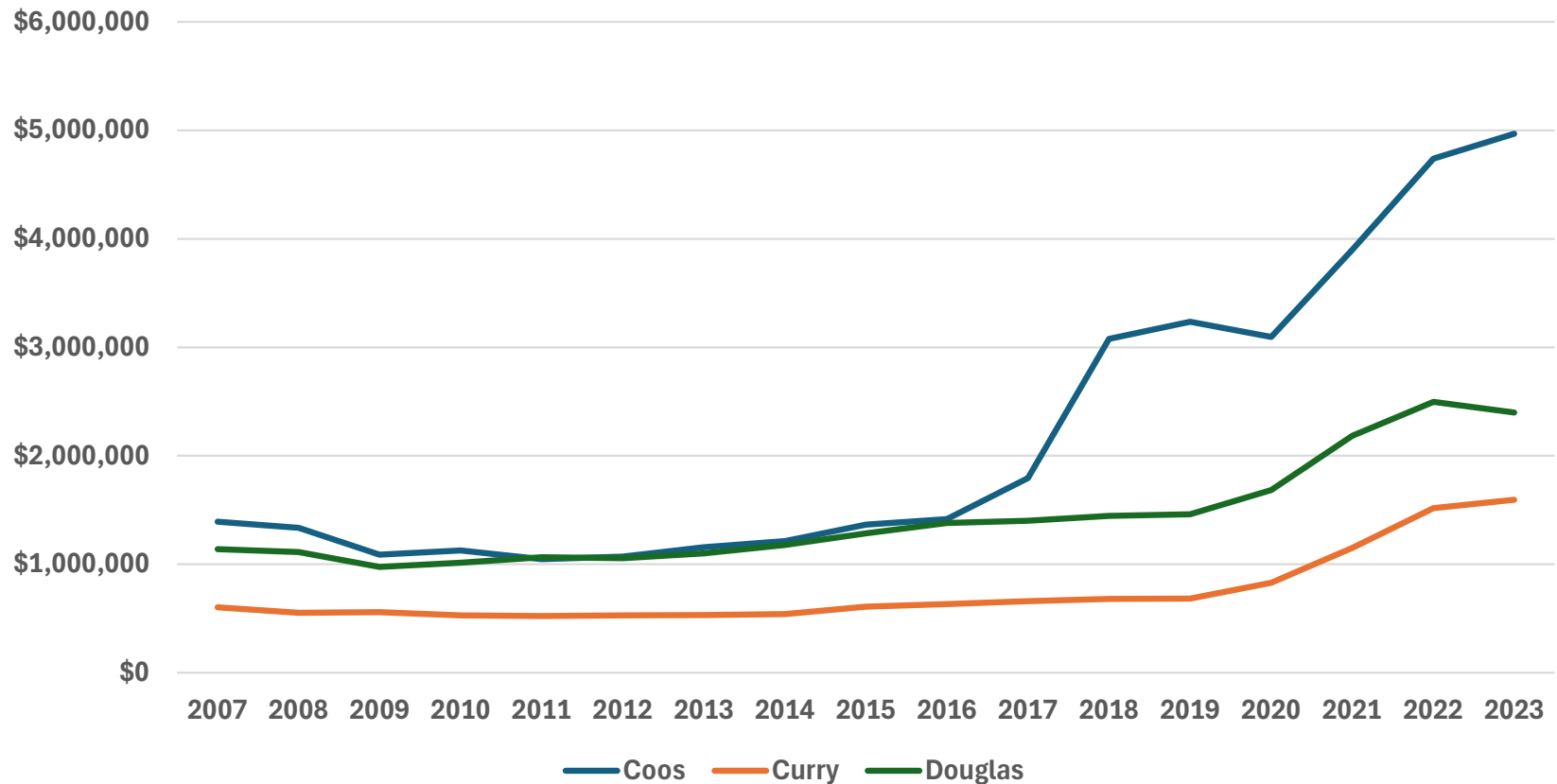


Coos County travel spending is still increasing post pandemic but at a slowing rate. Curry County is now generating more than twice as much travel spending as it did in 2007. Douglas travel spending has been leveling off.

Source: Dean Runyan Associates Travel Stats

# VISITOR SPENDING IMPACTS ON TAX REVENUES

## Local Tax Receipts Generated by Travel Spending



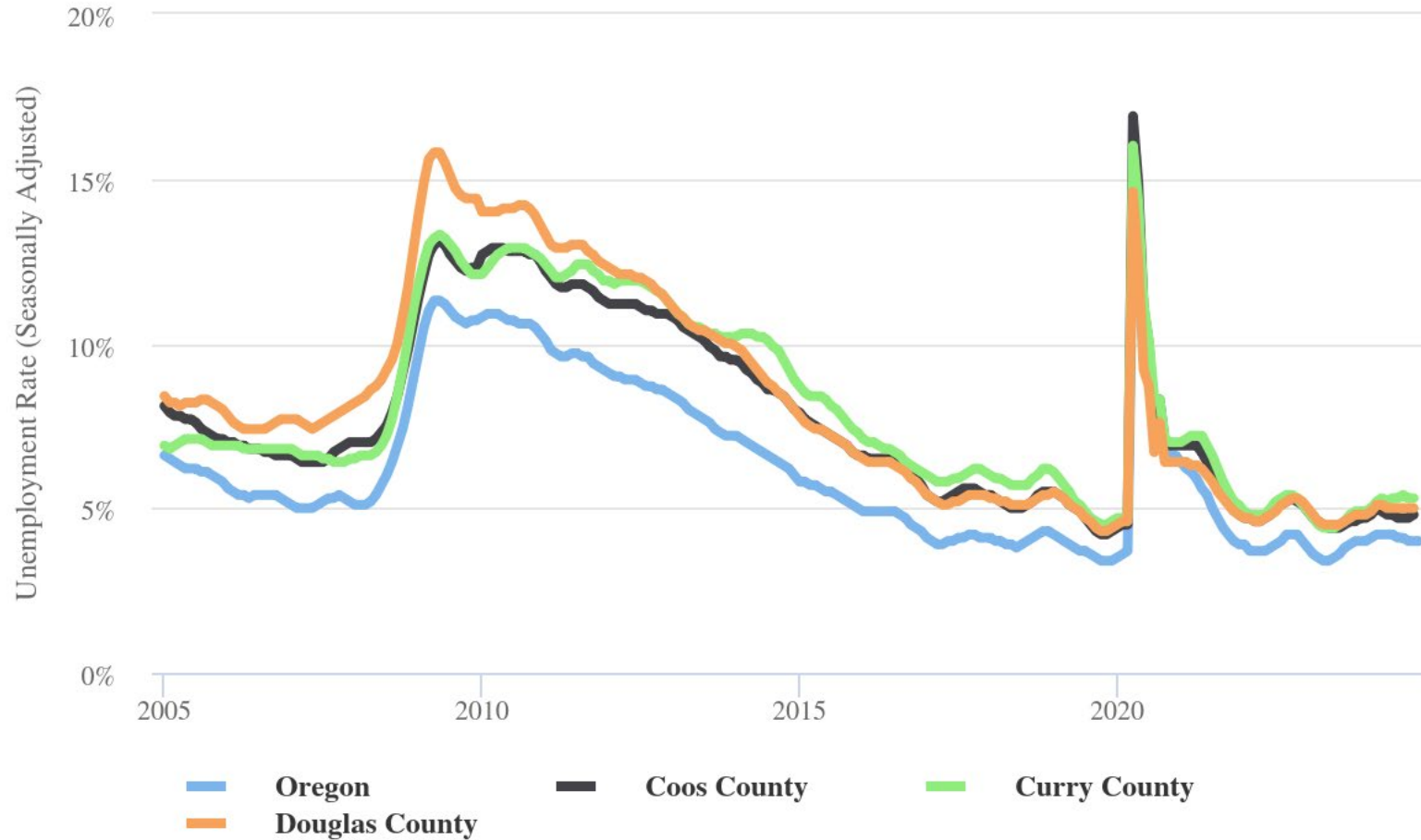
Coos County tax receipts generated by travel spending have nearly quintupled since 2011. Curry started to realize an increase following 2019. Douglas saw an increase through the pandemic but has since been declining.

# EMPLOYMENT OVERVIEW

Indicators & Job Vacancy Survey Insights

# SOUTHWESTERN OREGON UNEMPLOYMENT NEAR HISTORICALLY LOW LEVELS

## Unemployment Rate



Area	Unemployment Rate
Oregon	4.0%
Coos	4.8%
Curry	5.3%
Douglas	5.0%

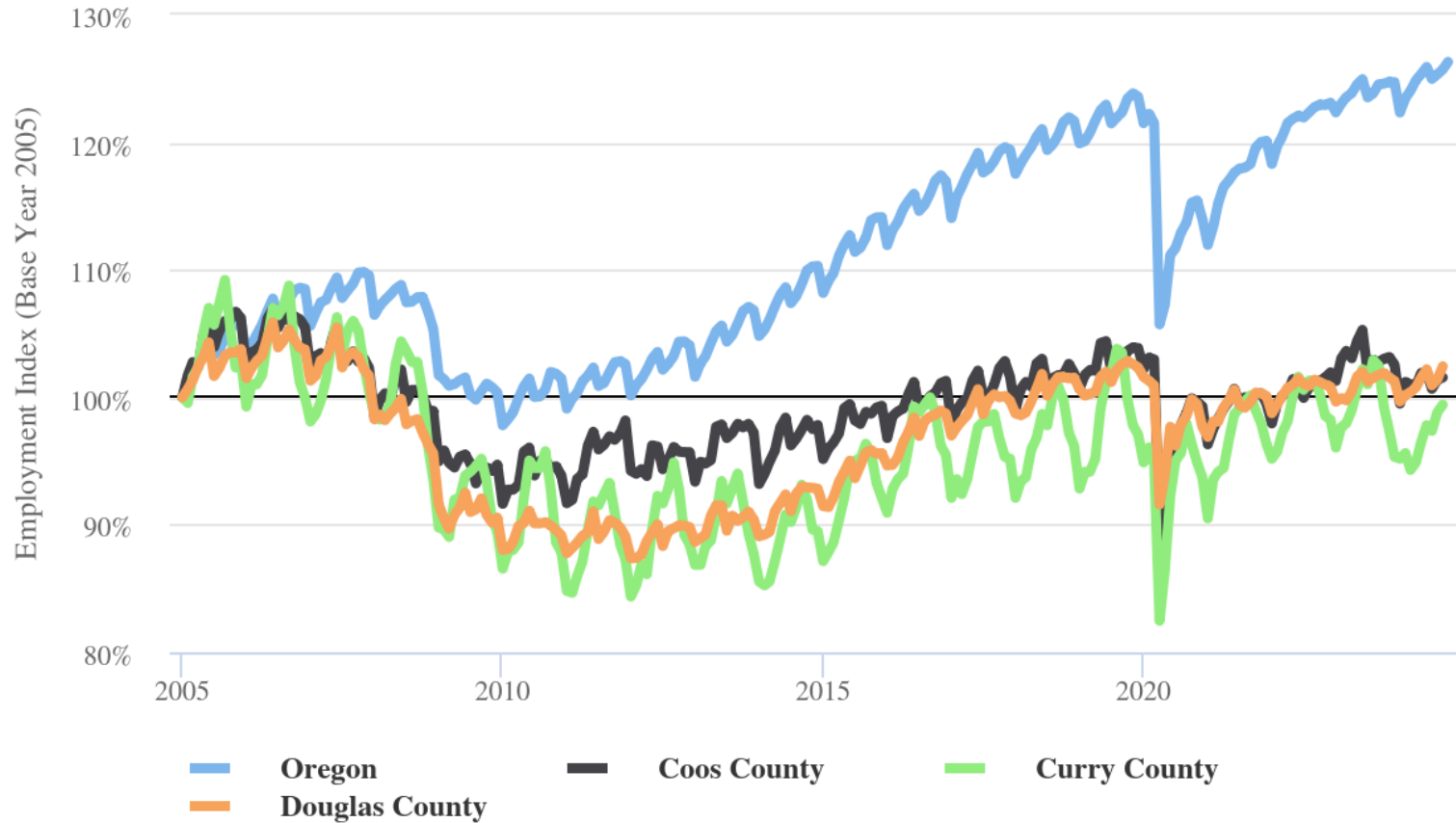
Source: Oregon Employment Department Qualityinfo.org

Source: Oregon Employment Department

# REGION TRACKING BELOW EMPLOYMENT GAINS STATEWIDE

## Total Nonfarm Employment

Indexed to Show Job Growth Over Time, Base Year 2005



Area	Employment Index
Oregon	126.3
Coos	101.6
Curry	99.4
Douglas	102.4

Source: Oregon Employment Department Qualityinfo.org

Source: Oregon Employment Department

# ACROSS OREGON, BUSINESSES REPORTED ROUGHLY 72,800 VACANCIES AT ANY GIVEN TIME IN 2023.

## Oregon Job Vacancies

	2019	2020	2021	2022	2023
<b>Vacancies</b>	<b>57,241</b>	<b>44,408</b>	<b>96,887</b>	<b>103,977</b>	<b>72,815</b>
Average Hourly Wage	\$18.81	\$18.05	\$19.69	\$21.66	\$25.13
Full-time Positions	77%	79%	78%	81%	82%
Permanent Positions	93%	92%	93%	94%	94%
Requiring Education Beyond High School	34%	33%	30%	29%	39%
Requiring Previous Experience	57%	53%	53%	52%	58%
Difficult to Fill	57%	51%	72%	72%	61%

The number of Oregon job vacancies declined from 2022 to 2023, as the recovery from the 2020 pandemic recession slowed. Employers reported about six out of 10 openings were difficult to fill in 2023.

Characteristics Oregon employers are looking for didn't change much during the pandemic recession and recovery. A typical job vacancy tends to be for a full-time, permanent position. 39% require education beyond high school and 58% require previous experience.

Source: Oregon Employment Department



# HEALTH CARE AND SOCIAL ASSISTANCE BUSINESSES REPORTED THE MOST VACANCIES OF ANY INDUSTRY.

Southwestern Oregon Job Vacancies by Industry, 2023

Industry	Vacancies	Average Hourly Wage
<b>All Industries</b>	<b>3,301</b>	<b>\$22.05</b>
Health care and social assistance	799	\$25.06
Leisure and hospitality	400	\$15.19
Retail trade	386	\$16.80
Construction	307	\$26.01
Management, administrative, and waste services	305	\$24.14
Manufacturing	283	\$22.29
Natural resources and mining	234	\$20.01
Transportation, warehousing, and utilities	168	\$20.65
Financial activities	134	\$21.53
Professional, scientific, and technical services	103	\$32.59
Other services	99	\$22.48
Wholesale trade	38	n/a
Information	24	n/a

Source: Oregon Employment Department

# AREA BUSINESSES WERE HIRING FOR A VARIETY OF JOBS ACROSS THE ECONOMY IN 2023. THEY REPORTED VACANCIES FOR 143 DIFFERENT OCCUPATIONS.

## Top Southwestern Oregon Occupations With the Highest Number of Job Vacancies, 2023

<b>Occupation</b>	<b>Vacancies</b>
<b>All Occupations</b>	<b>3,301</b>
Heavy and Tractor-Trailer Truck Drivers	169
Retail Salespersons	145
Firefighters	121
Construction Laborers	110
Personal Care Aides	110
Fast Food and Counter Workers	83
Nursing Assistants	81
Production Workers, All Other	81
Registered Nurses	80
Carpenters	74
Cooks, Restaurant	69
Maids and Housekeeping Cleaners	69
Cashiers	68
Therapists, All Other	64
Medical and Clinical Laboratory Technicians	62

Source: Oregon Employment Department

**JEFF MCALLISTER, WORKFORCE ANALYST**  
**JEFF.S.MCALLISTER@EMPLOY.OREGON.GOV**

**SIGN UP FOR THE LATEST WORKFORCE AND ECONOMIC RESEARCH**  
**[WWW.QUALITYINFO.ORG/SUBSCRIBE](http://WWW.QUALITYINFO.ORG/SUBSCRIBE)**

**FOLLOW US ON X [@OED\\_RESEARCH](#) AND LINKEDIN**

**SCAN ME**

